

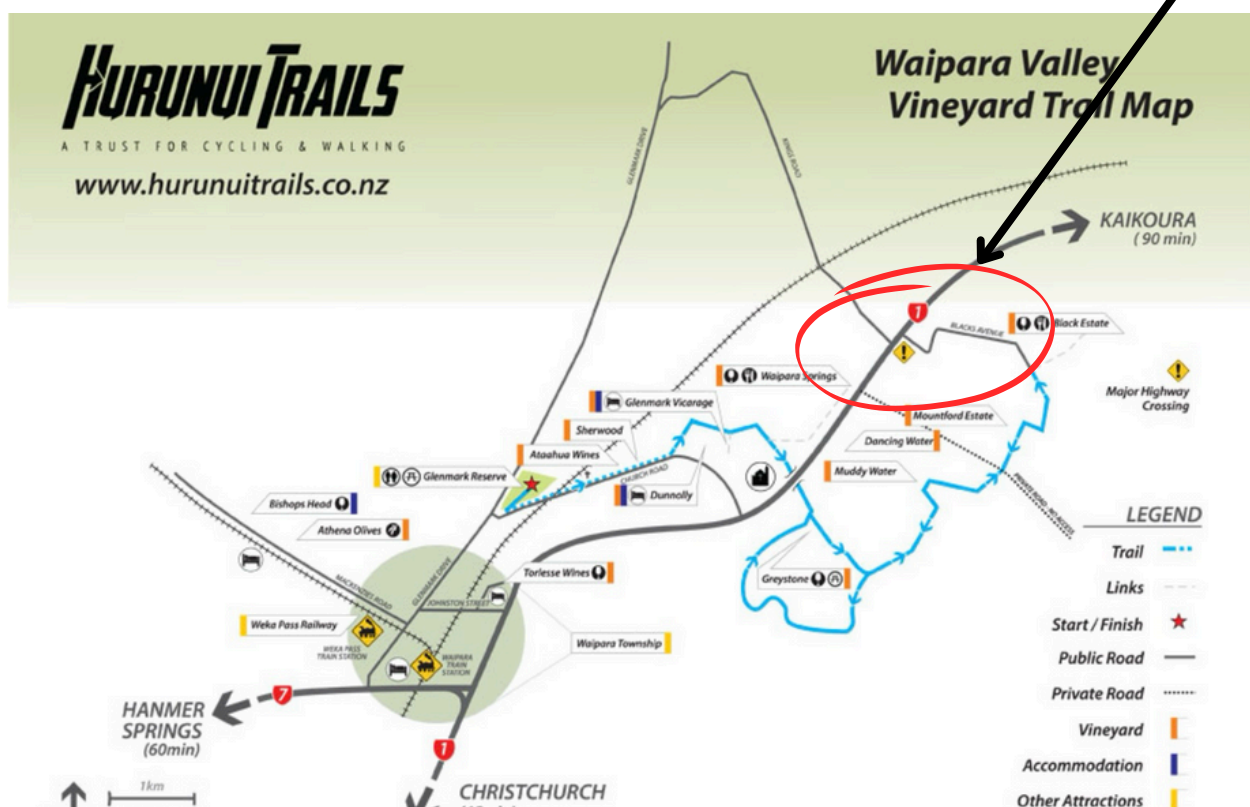


Stage 3 to complete the loop of the Waipara Valley Walking & Cycling Trail is now underway!

Hurunui Trails Trust was granted its Resource Consent for the Omihi Creek Bridge last month so now an enthusiastic local committee are starting the fundraising project to build the Omihi Creek Bridge at the bottom of Black's Ave which completes the Waipara Valley Trail loop.

This vital bridge will finish the Waipara Valley Trail and allow a safe link for cyclists and walkers to cross Omihi Creek and State highway 1. When the bridge is built, the completed trail will start from Glenmark Reserve in Waipara, cruise past 8 vineyards, farms and B & Bs and then *across the Omihi Creek back to Kings Road which then loops back around to Glenmark Drive and Waipara.*

The Waipara Valley Trail has been a vision of the charitable Hurunui Trails Trust since the trust was established in 2007. Since 2010, the trust has fundraised, built and maintained 8 km of trail from Glenmark Domain to Black Estate/Black's Avenue. Now we are ready to complete the loop and need your help! Location of the bridge is circled in red below. See hurunuitrails.org.nz for more information.





The estimated total funds to raise for this bridge is \$200,000.

We are asking founding donors, individuals and businesses to donate a total of \$20,000 before Christmas 2024 to seed fund Stage 3. This seed funding will cover the following urgent steps:

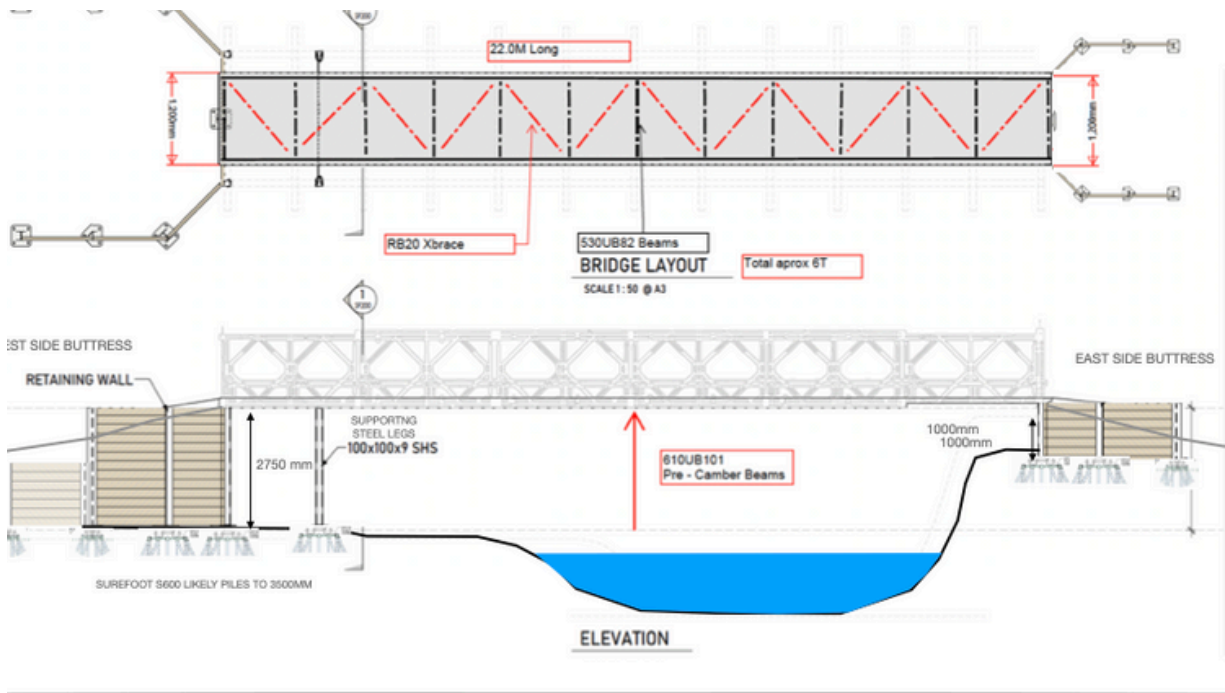
- Clearing the proposed bridge area for access and measuring.
- Surveying the land to confirm locations for foundations and accurate structural design.
- Geotechnical site investigation.
- Detailed structural and architectural design for the bridge.
- Final costing and quoting of the bridge.

You can donate in \$1,000, \$2000 and \$5000.

Any donation of \$2000 and above will receive 2 complimentary tickets to our fundraising evening at Black Estate on 22 November! See information about the event here and please tell your friends.



The Bridge is located 80 meters downstream of the Omihū Creek Bridge on State Highway 1. We have approximately 400 meters of track to build which will link Kings Road down to the Omihū Creek Bridge and up Blacks Ave. Funding will be also used for the on and off trails to this bridge. See the consented design on the next page,



For this initial seed funding we are asking for donations by 30 November to help us get this project under way. As a charitable trust you will receive a donation receipt that allows you to claim a 33.3 % rebate and tax return.

Our details are Hurunui Trails Trust Board and the CC number is CC39054.

We will also be hosting a fundraising evening and auction at Black Estate Restaurant on 22 November where we will hold an exciting (short) auction during the evening with casual food and good wine and music! Founding members who donate prior to the event will be provided complimentary tickets. It is going to be quite a party. Individual donations are welcome on the night. **Tickets are for sale on the Black Estate website here.**

As a founding member of the Omihi Cycling Bridge fundraiser your support will be recognized and we would be happy to discuss these details with you at a time that suited.

We would love to have your support towards this incredible community venture for Waipara Valley and North Canterbury.

Your fundraising committee - Pen Naish, Henry Savill, Deborah McCormick, Sue McGregor, Conor Paton, Julianne Liebeck, Georgie Waddie, Jax Lee, Kim Marshall.